



FLORIDA INLAND NAVIGATION DISTRICT

COMMISSIONERS

January 9, 2017

DONALD J. CUOZZO
CHAIR
MARTIN COUNTY

JON NETTS
VICE-CHAIR
FLAGLER COUNTY

SUSANNE McCABE
TREASURER
VOLUSIA COUNTY

DON DONALDSON
SECRETARY
ST. LUCIE COUNTY

J. CARL BLOW
ST. JOHNS COUNTY

E. TYLER CHAPPELL
BROWARD COUNTY

T. SPENCER CROWLEY, III
MIAMI-DADE COUNTY

PAUL U. DRITENBAS
INDIAN RIVER COUNTY

CHARLES C. ISIMINGER
PALM BEACH COUNTY

MICHAEL O'STEEN
DUVAL COUNTY

JERRY H. SANSOM
BREVARD COUNTY

LYNN A. WILLIAMS
NASSAU COUNTY

MARK T. CROSLEY
EXECUTIVE DIRECTOR

JANET ZIMMERMAN
ASSISTANT EXECUTIVE
DIRECTOR

To: Potential Bidders

From: Mark M. Tamblyn, Field Projects Coordinator

Subject: Monitoring Well sampling at Sites BV-2C, BV-4B, BV-11, BV-52.

Enclosed are the bid documents and scope of work for the referenced project. **Bids are due in the District office no later than 2:00 PM on February 10, 2017.** A bid will consist of the completed bid submittal form. Bids may be faxed, mailed or hand delivered.

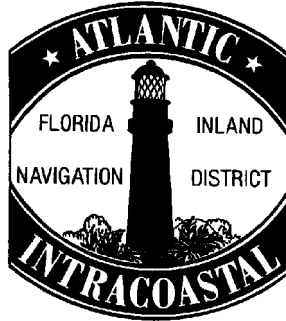
There will be one award of this contract to the lowest qualified bidder, however, the District reserves the right to not award a contract based on its discretion. The District also reserves the right to expand or reduce the scope of work of this contract upon negotiation with contractor.

Please contact me should you have any questions concerning this matter.



FLORIDA INLAND NAVIGATION DISTRICT

Brevard County
Monitoring Well Sampling
Bid Package
January 9, 2017



SCOPE OF WORK
MONITORING WELL SAMPLING
SITES BV-2C, BV-4B, BV-11, BV-52
BREVARD COUNTY, FLORIDA
JANUARY 9, 2017

Dredge Material Management Areas BV-2C, BV-4B, BV-11, BV-52 are located in Brevard County, Florida. The Florida Inland Navigation District owns, operates and manages dredged materials from the Atlantic Intracoastal Waterway on these sites. The specific locations of the (4) four sites are referenced in Attachments A, B, C, D, E.

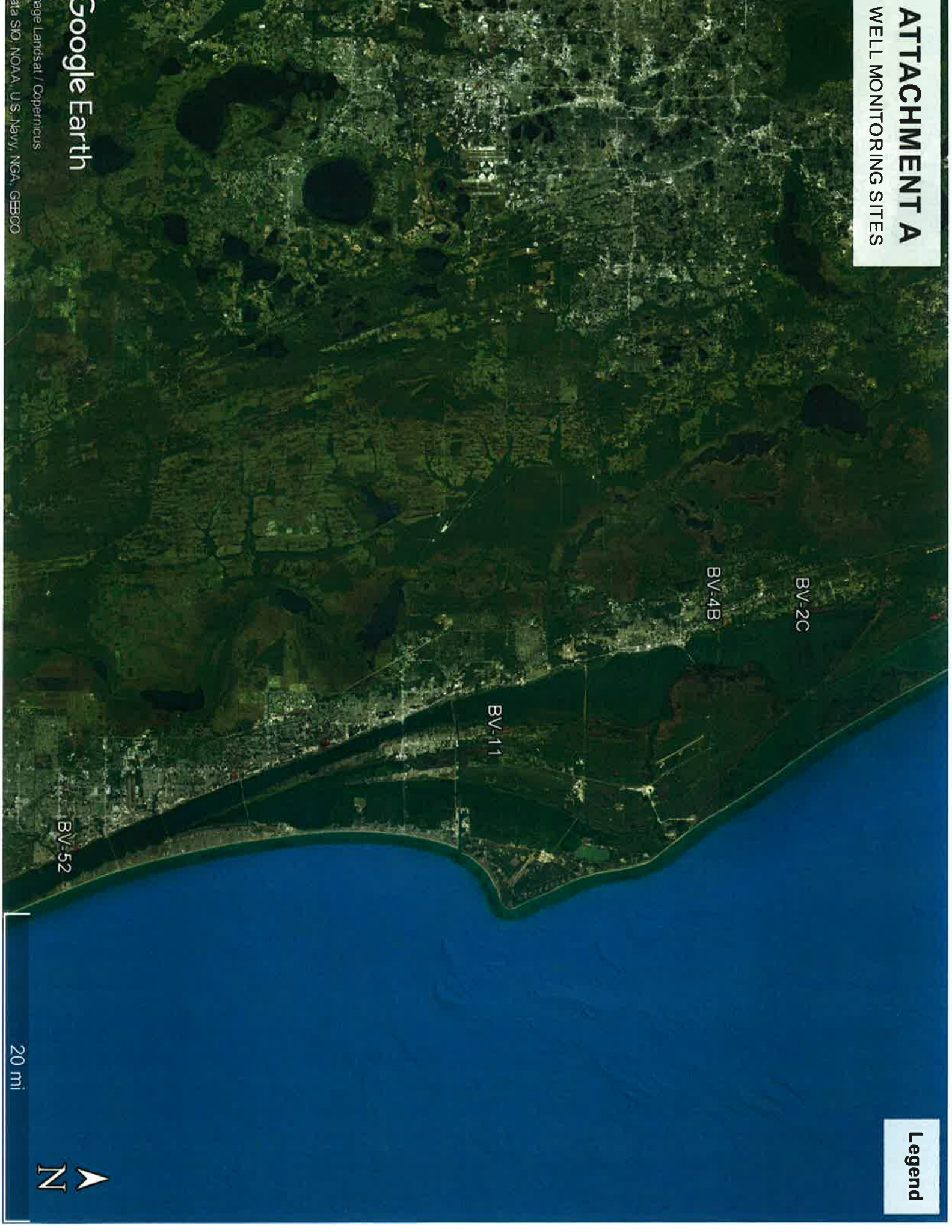
The contractor will sample the twenty-seven (27) monitoring wells located on the subject sites on a quarterly basis for (3) three years. The sampling will be conducted under Florida Department of Environmental Protection, Standard Operating Procedures (FDEP-SOP-001/01), FS-2200 for groundwater sampling. The sampling analysis will consist of chloride, PH, TDS, and turbidity.

A field sampling data sheet will be prepared for each well sampled that will include depth to water and a calculation of well volume for purging. One field equipment blank and one duplicate sample will be taken during each quarterly sampling round in order to meet Quality Assurance/Quality Control (QA/QC) requirements. Each sample will be analyzed by a state certified testing laboratory in accordance to the following: EPA Method 300 for dissolved chloride, EPA Method 150.1 for PH, EPA Method 160.1 for TDS, and EPA Method 180.1 for turbidity. A Chain of Custody form will be completed properly identifying sample locations, sample type, sampler, etc.

Quarterly results will be reported in a cumulative table. Original copies of laboratory data and field sampling sheets will be attached to the quarterly report. Each quarterly report will be reviewed, signed and sealed by a State of Florida licensed Professional Geologist. The District requires the report be submitted within 15 days of completion of sampling. All reports will be submitted to the District in electronic format, not printed format. The District may also require specific standardized forms be used in reporting the well data, they will be supplied.

ATTACHMENT A
WELL MONITORING SITES

Legend



Google Earth

Image Landsat / Copernicus
Data SIO, NOAA, U.S. Navy, NGA, GEBCO

20 mi

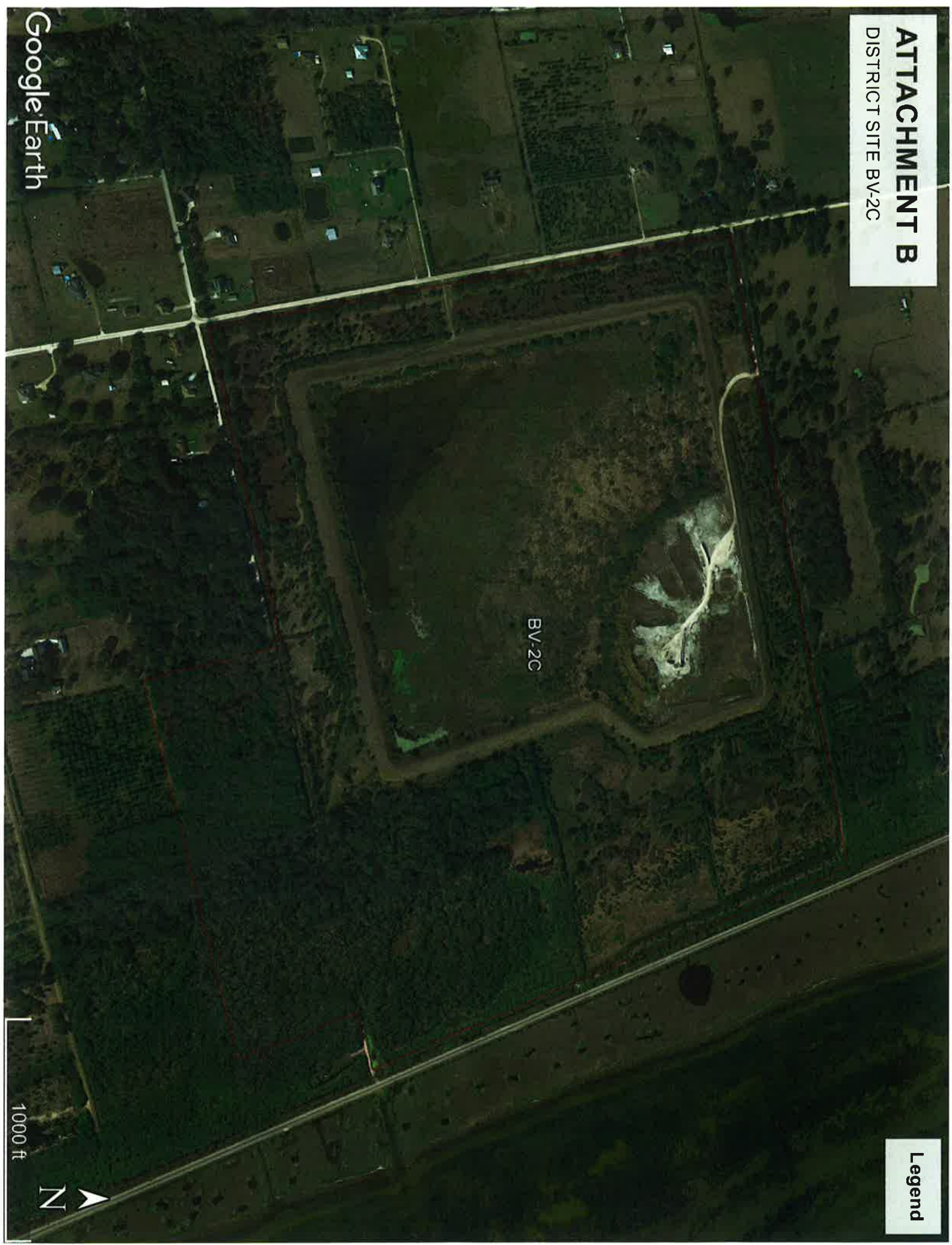


ATTACHMENT B
DISTRICT SITE BV-2C

BV-2C

Legend

1000 ft



ATTACHMENT C
DISTRICT SITE BV-4B

Legend

BV-4B

1000 ft

Google Earth



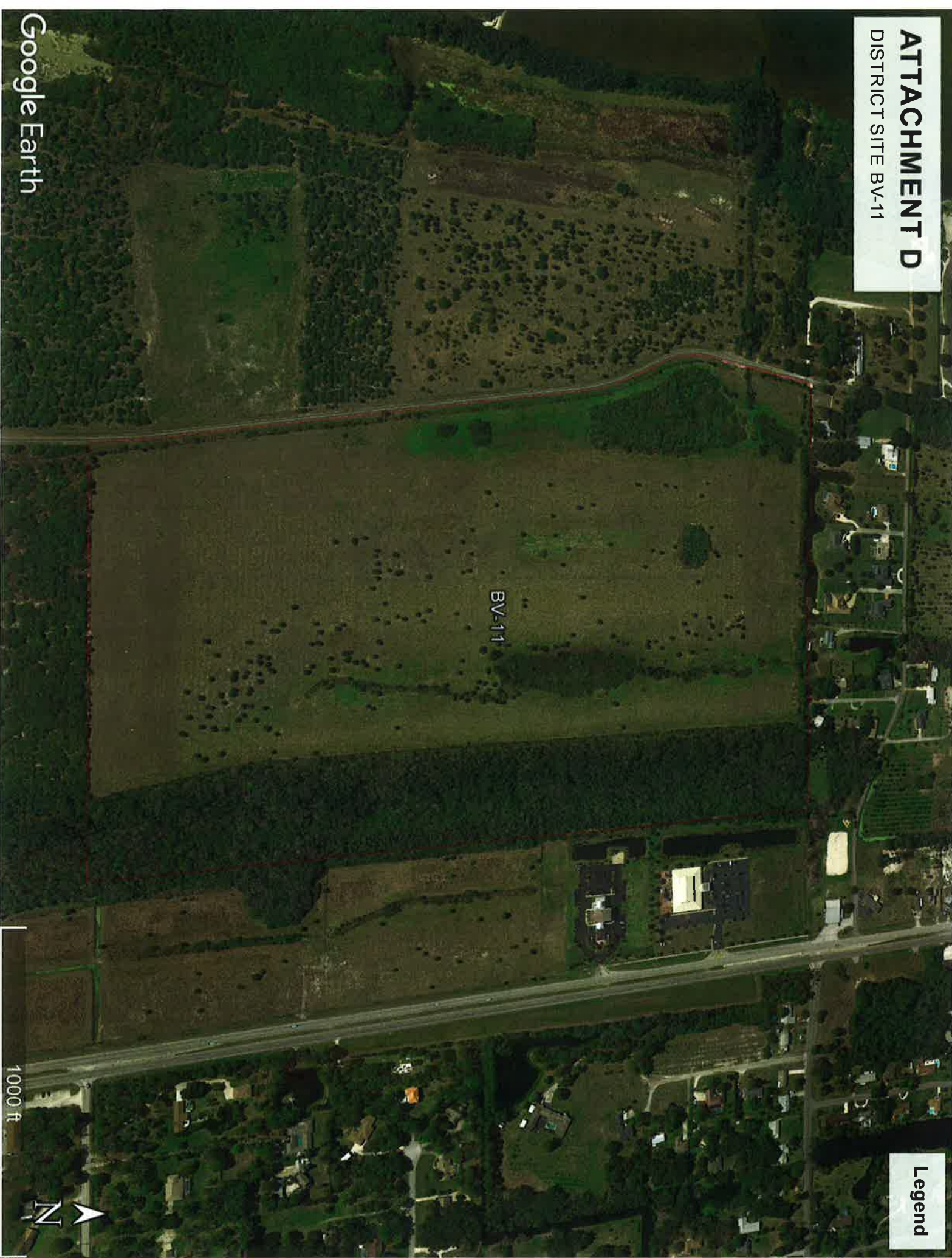
ATTACHMENT D

DISTRICT SITE BV-11

Legend

BV-11

1000 ft



ATTACHMENT E
DISTRICT SITE BV-52



Google Earth

BV-52

700 ft



Legend

FLORIDA INLAND NAVIGATION DISTRICT

**SITES BV-2C, BV-4B, BV-11, BV-52
WELL MONITORING PROJECT**

Bid Submittal Form

Bids are to be made on a total cost basis with an award made to the low qualified bidder.

NAME OF FIRM: _____

ADDRESS: _____

TELEPHONE: _____

REFERENCES: (Name, Address, Phone, Contact Person)

1. _____

2. _____

TOTAL PROJECT BID COST \$ _____

Signature

Title