



FLORIDA INLAND NAVIGATION DISTRICT

COMMISSIONERS

January 7, 2017

DONALD J. CUOZZO
CHAIR

MARTIN COUNTY

JON NETTS

VICE-CHAIR

FLAGLER COUNTY

SUSANNE McCABE

TREASURER

VOLUSIA COUNTY

DON DONALDSON

SECRETARY

ST. LUCIE COUNTY

J. CARL BLOW

ST. JOHNS COUNTY

E. TYLER CHAPPELL

BROWARD COUNTY

T. SPENCER CROWLEY, III

MIAMI-DADE COUNTY

PAUL U. DRITENBAS

INDIAN RIVER COUNTY

CHARLES C. ISIMINGER

PALM BEACH COUNTY

MICHAEL O'STEEN

DUVAL COUNTY

JERRY H. SANSOM

BREVARD COUNTY

LYNN A. WILLIAMS

NASSAU COUNTY

MARK T. CROSLEY

EXECUTIVE DIRECTOR

JANET ZIMMERMAN

ASSISTANT EXECUTIVE

DIRECTOR

To: Monitoring Well Sampling Bidders
From: Mark M. Tamblyn, Field Projects Coordinator
Subject: Duval & St. Johns County Dredge Material Management
Areas Sites DU-2, 6, 8, 9 & SJ- 14.

Enclosed are the bid documents for the referenced project. **Bids are due in the District office no later than 2:00 PM on February 7, 2017.** A bid will consist of the completed bid submittal form. Bids may be faxed, mailed or hand delivered.

There will be one award of this contract to the lowest qualified bidder, however, the District reserves the right to not award a contract based on its discretion. The District also reserves the right to expand or reduce the scope of work of this contract upon negotiation with contractor.

Please contact me should you have any questions concerning this matter.



FLORIDA INLAND NAVIGATION DISTRICT
Duval & St. Johns County
Monitoring Well Sampling
Bid Package
January 7, 2017



SCOPE OF WORK
MONITORING WELL SAMPLING
DMMA'S DU-2, 6, 8, & 9 & SJ-14
Duval & St. Johns County, Florida
January 7, 2017

Dredge Material Management Areas DU-2, DU-6, DU-8, DU-9 are located in Duval County, and SJ-14 is located in St. Johns County Florida. The specific locations of the five sites are referenced in Attachments A, B, C, D, E, and F.

The contractor will sample the thirty (30) monitoring wells located on the subject sites on a quarterly basis for (3) three years. The sampling will be conducted under Florida Department of Environmental Protection, Standard Operating Procedures (FDEP-SOP-001/01), FS-2200 for groundwater sampling. The sampling analysis will consist of chloride, PH, TDS, and turbidity.

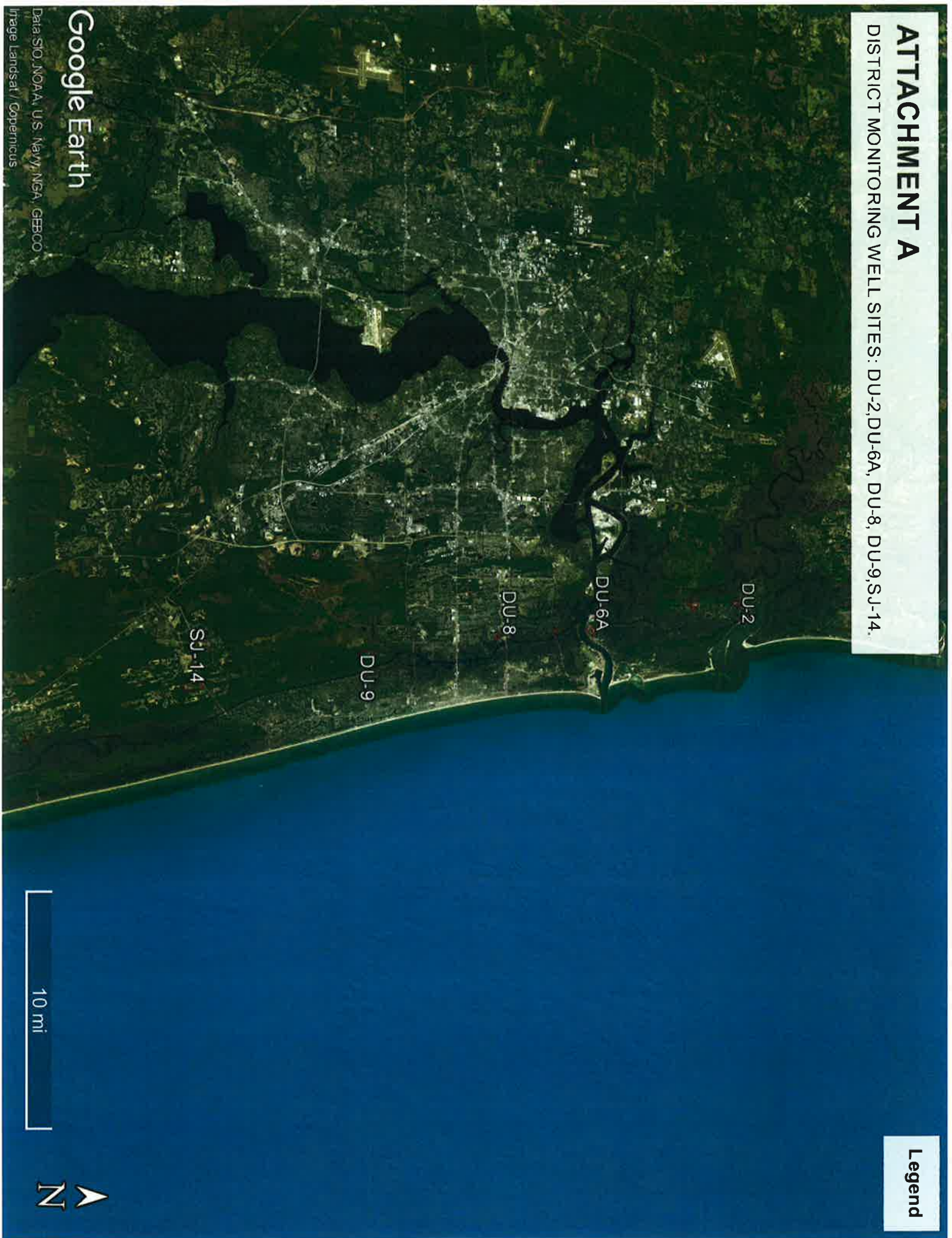
A field sampling data sheet will be prepared for each well sampled that will include depth to water and a calculation of well volume for purging. One field equipment blank and one duplicate sample will be taken during each quarterly sampling round in order to meet Quality Assurance/Quality Control (QA/QC) requirements. Each sample will be analyzed by a state certified testing laboratory in accordance to the following: EPA Method 300 for dissolved chloride, EPA Method 150.1 for PH, EPA Method 160.1 for TDS, and EPA Method 180.1 for turbidity. A Chain of Custody form will be completed properly identifying sample locations, sample type, sampler, etc.

Quarterly results will be reported in a cumulative table. Original copies of laboratory data and field sampling sheets will be attached to the quarterly report. Each quarterly report will be reviewed, signed and sealed by a State of Florida licensed Professional Geologist. The District requires the report be submitted within 15 days of completion of sampling. All reports will be submitted to the District in electronic format, not printed format. The District may also require specific standardized forms be used in reporting the well data, they will be supplied.

ATTACHMENT A

DISTRICT MONITORING WELL SITES: DU-2, DU-6A, DU-8, DU-9, SJ-14.

Legend



Google Earth

Data: SIO, NOAA, U.S. Navy, NGA, GEBCO
Image Landsat / Copernicus

10 mi



ATTACHMENT B

DISTRICT SITE DU-2

Legend

DU-2

900 ft



ATTACHMENT C

DISTRICT SITE DU-6A

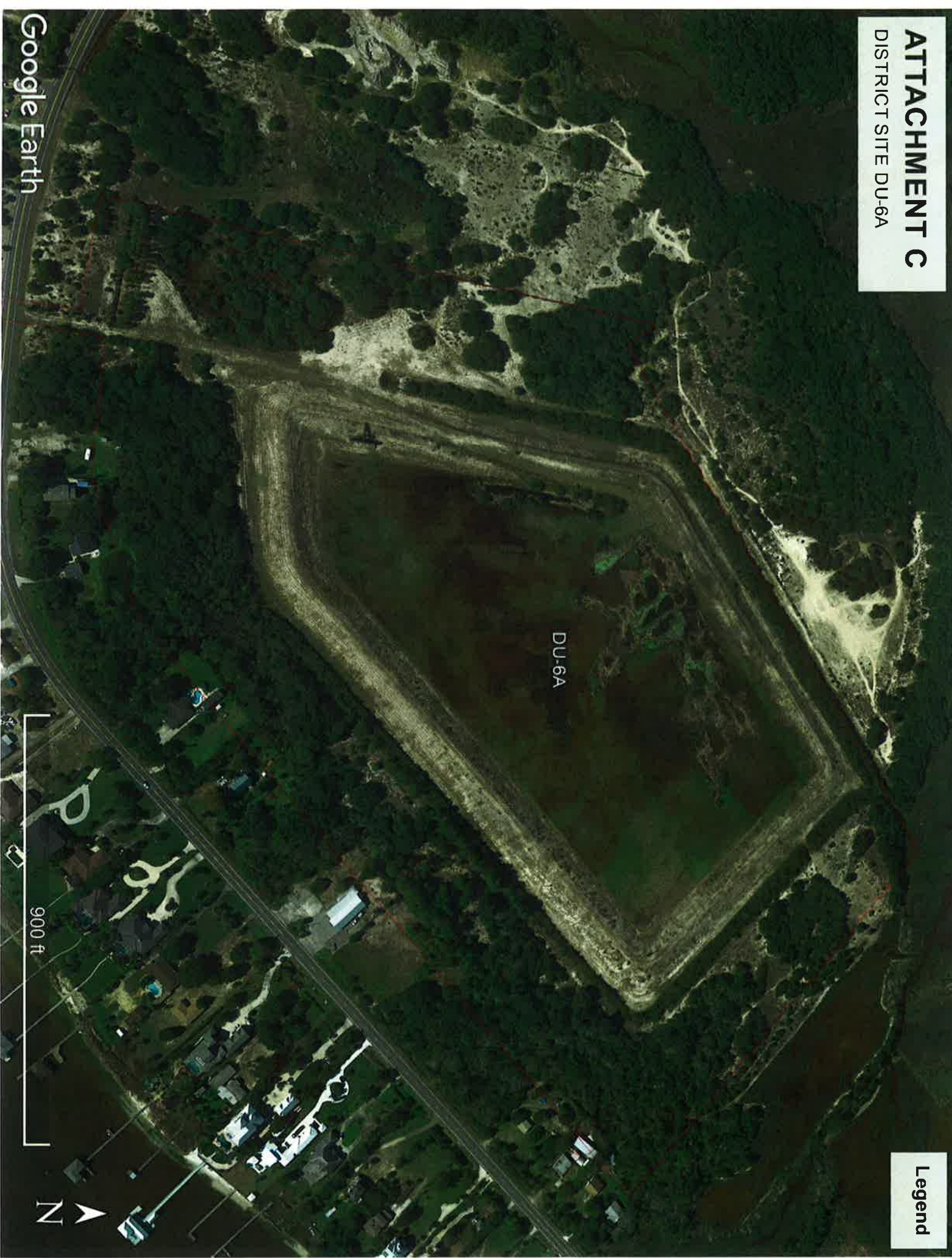
Legend

DU-6A



900 ft

Google Earth



ATTACHMENT D
DISTRICT SITE DU-8

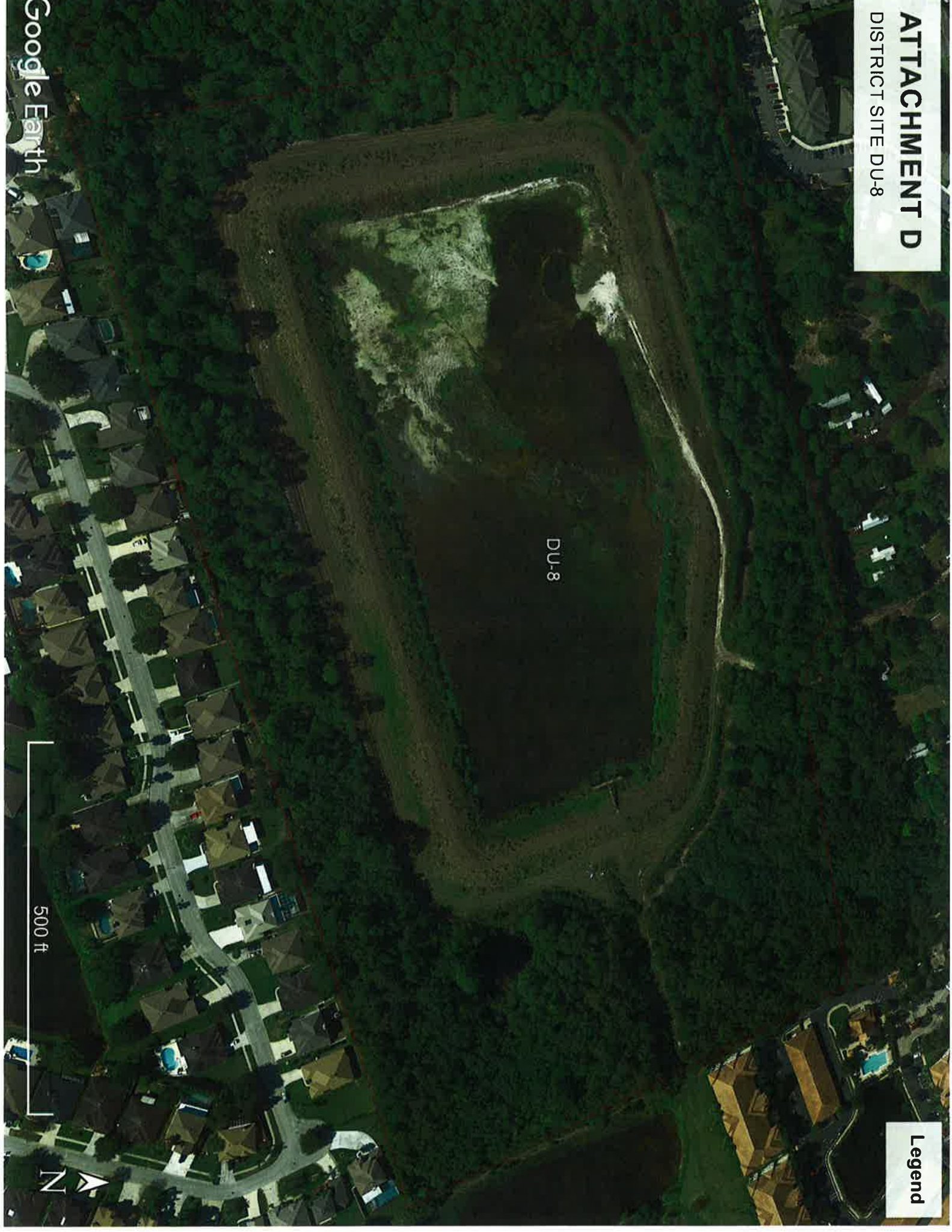
DU-8

Legend

500 ft



Google Earth



ATTACHMENT E

DISTRICT SITE DU-9

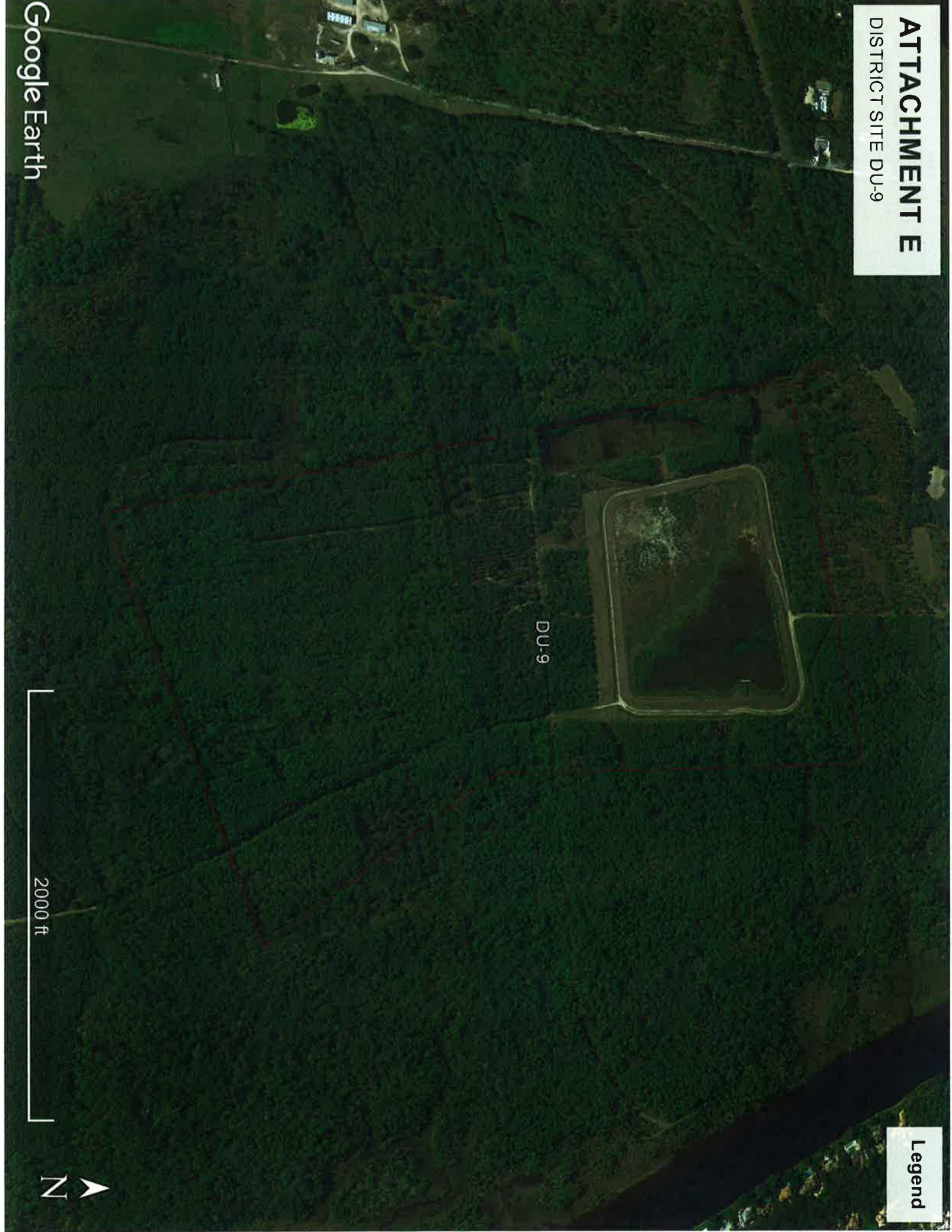
Legend

DU-9

2000 ft



Google Earth



ATTACHMENT F
DISTRICT SITE SJ-14



SJ-14

2000 ft



Legend

FLORIDA INLAND NAVIGATION DISTRICT

**MONITORING WELL SAMPLING
DUVAL & ST. JOHNS COUNTY DMMA'S
DU-2, 6, 8, and 9, SJ-14**

Bid Submittal Form

Bids are to be made on a total cost basis with an award made to the low qualified bidder.

NAME OF FIRM: _____

ADDRESS: _____

TELEPHONE: _____

REFERENCES: (Name, Address, Phone, Contact Person)

1. _____

2. _____

COST PER SAMPLING EVENT \$ _____

TOTAL PROJECT COST TWELVE (12) SAMPLING EVENTS \$ _____

Signature

Title