



# FLORIDA INLAND NAVIGATION DISTRICT

COMMISSIONERS

January 9, 2017

**DONALD J. CUOZZO**  
CHAIR  
MARTIN COUNTY

**JON NETTS**  
VICE-CHAIR  
FLAGLER COUNTY

**SUSANNE McCABE**  
TREASURER  
VOLUSIA COUNTY

**DON DONALDSON**  
SECRETARY  
ST. LUCIE COUNTY

**J. CARL BLOW**  
ST. JOHNS COUNTY

**E. TYLER CHAPPELL**  
BROWARD COUNTY

**T. SPENCER CROWLEY, III**  
MIAMI-DADE COUNTY

**PAUL U. DRITENBAS**  
INDIAN RIVER COUNTY

**CHARLES C. ISIMINGER**  
PALM BEACH COUNTY

**MICHAEL O'STEEN**  
DUVAL COUNTY

**JERRY H. SANSOM**  
BREVARD COUNTY

**LYNN A. WILLIAMS**  
NASSAU COUNTY

**MARK T. CROSLEY**  
EXECUTIVE DIRECTOR

**JANET ZIMMERMAN**  
ASSISTANT EXECUTIVE  
DIRECTOR

To: Potential Bidders

From: Mark M. Tamblyn, Field Projects Coordinator

Subject: Monitoring Well sampling at District Dredge Material Management Areas MSA-617C, MSA-640, MSA-641.

Enclosed are the bid documents and scope of work for the referenced project. **Bids are due in the District office no later than 2:00 PM on February 9, 2017.** A bid will consist of the completed bid submittal form. Bids may be faxed, mailed or hand delivered.

There will be one award of this contract to the lowest qualified bidder, however, the District reserves the right to not award a contract based on its discretion. The District also reserves the right to expand or reduce the scope of work of this contract upon negotiation with contractor.

Please contact me should you have any questions concerning this matter.



**FLORIDA INLAND NAVIGATION DISTRICT**  
Palm Beach County  
Dredge Material Management Area  
Monitoring Well Sampling  
Bid Package  
January 9, 2017



SCOPE OF WORK  
MONITORING WELL SAMPLING  
DMMA'S MSA-617, MSA-640, MSA-641  
PALM BEACH COUNTY, FLORIDA  
JANUARY 9, 2017

Dredge Material Management Areas (DMMA'S) MSA-617, MSA-640, MSA-641 are located in Palm Beach County, Florida. The Florida Inland Navigation District owns, operates and manages dredged materials from the Atlantic Intracoastal Waterway on these sites. The specific locations of the (3) three sites are referenced in Attachments A, B, C.

The contractor will sample the thirteen (13) monitoring wells located on the subject sites on a quarterly basis for (3) three years. The sampling will be conducted under Florida Department of Environmental Protection, Standard Operating Procedures (FDEP-SOP-001/01), FS-2200 for groundwater sampling. The sampling analysis will consist of chloride, PH, TDS, and turbidity.

A field sampling data sheet will be prepared for each well sampled that will include depth to water and a calculation of well volume for purging. One field equipment blank and one duplicate sample will be taken during each quarterly sampling round in order to meet Quality Assurance/Quality Control (QA/QC) requirements. Each sample will be analyzed by a state certified testing laboratory in accordance to the following: EPA Method 300 for dissolved chloride, EPA Method 150.1 for PH, EPA Method 160.1 for TDS, and EPA Method 180.1 for turbidity. A Chain of Custody form will be completed properly identifying sample locations, sample type, sampler, etc.

Quarterly results will be reported in a cumulative table. Original copies of laboratory data and field sampling sheets will be attached to the quarterly report. Each quarterly report will be reviewed, signed and sealed by a State of Florida licensed Professional Geologist. The District requires the report be submitted within 15 days of completion of sampling. All reports will be submitted to the District in electronic format, not printed format. The District may also require specific standardized forms be used in reporting the well data, they will be supplied.

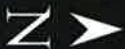
# ATTACHMENT A

DISTRICT SITE MSA-641

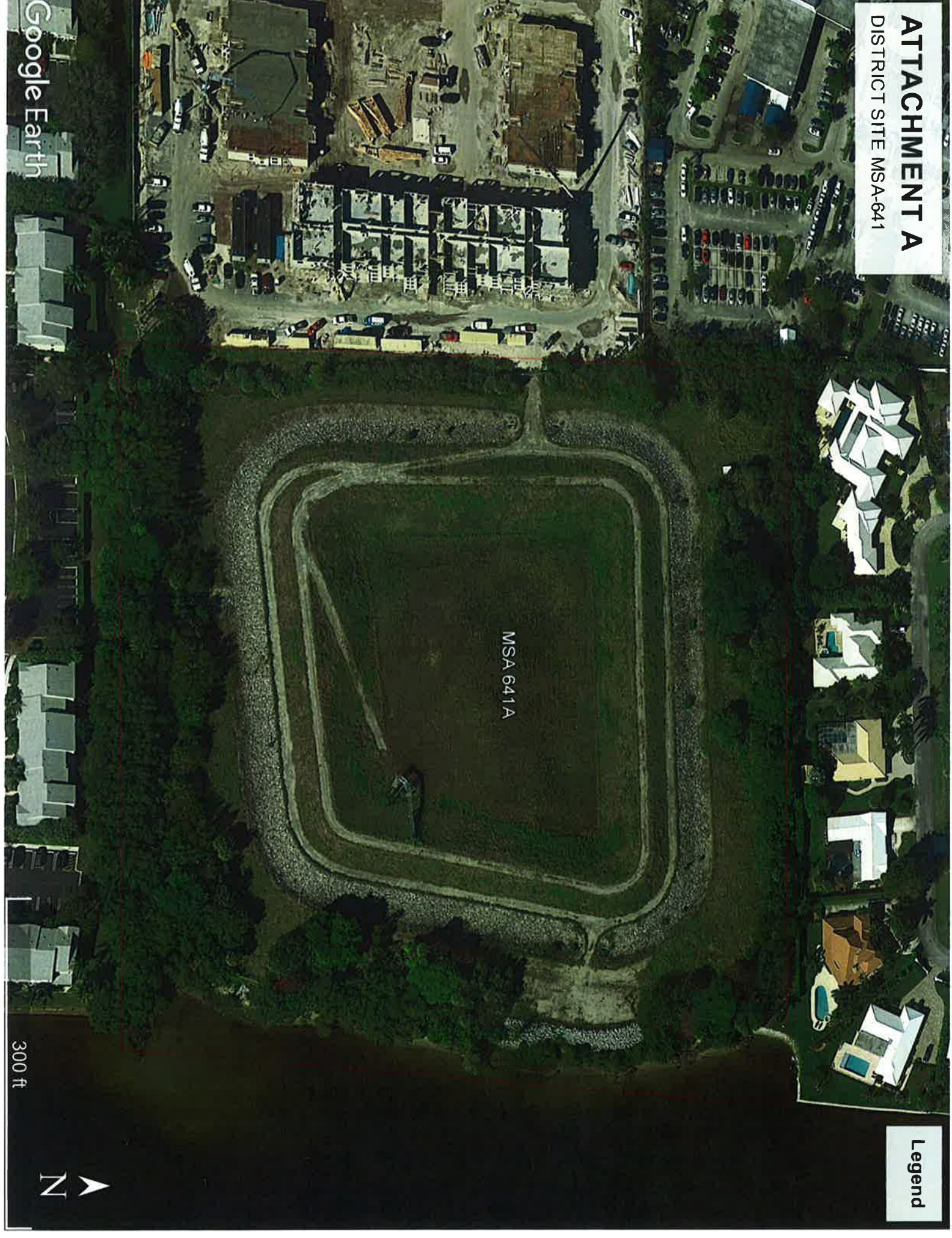
MSA 641A

Legend

300 ft



Google Earth



# ATTACHMENT B

DISTRICT SITE MSA-640

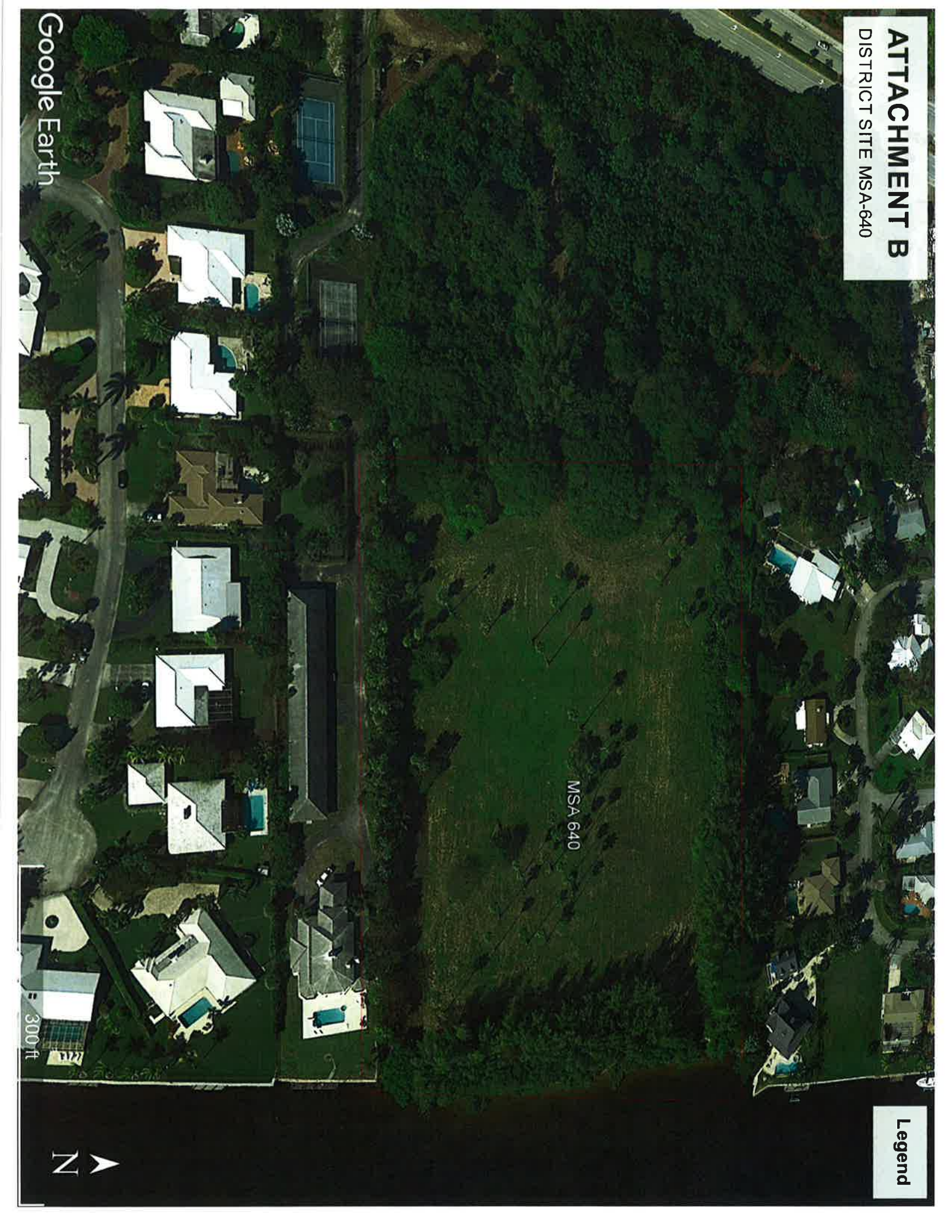
MSA 640

Legend



Google Earth

300 ft



# ATTACHMENT C

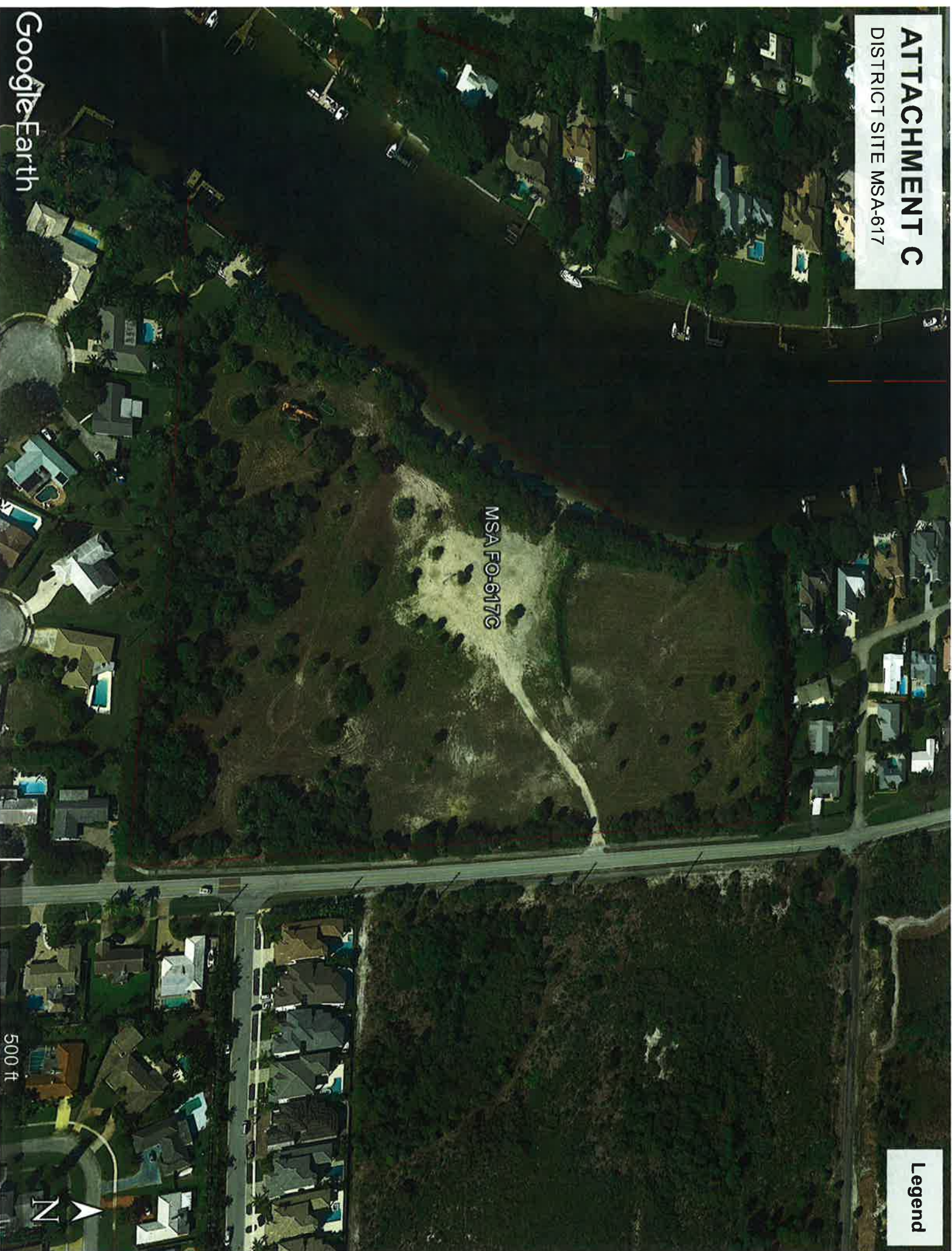
DISTRICT SITE MSA-617

MSA FO-617G

Legend

Google Earth

500 ft



**FLORIDA INLAND NAVIGATION DISTRICT**

**DMMA'S MSA-617C, MSA-640, MSA-641  
WELL MONITORING PROJECT**

**Bid Submittal Form**

Bids are to be made on a total cost basis with an award made to the low qualified bidder.

NAME OF FIRM: \_\_\_\_\_

ADDRESS: \_\_\_\_\_

\_\_\_\_\_

TELEPHONE: \_\_\_\_\_

REFERENCES: (Name, Address, Phone, Contact Person)

1. \_\_\_\_\_

\_\_\_\_\_

2. \_\_\_\_\_

\_\_\_\_\_

**COST PER SAMPLING EVENT** \$ \_\_\_\_\_

**TOTAL PROJECT COST TWELVE (12) SAMPLING EVENTS** \$ \_\_\_\_\_

\_\_\_\_\_  
Signature

\_\_\_\_\_  
Title