

CHANNEL INFORMATION PER "FERNANDINA HARBOR PROJECT CONDITION SURVEY" BY US ARMY CORPS OF ENGINEERS DATED FEBRUARY 2008

CHANNEL INFORMATION PER "FERNANDINA HARBOR PROJECT CONDITION SURVEY" BY US ARMY CORPS OF ENGINEERS DATED FEBRUARY 2008

**AMELIA RIVER**

WATER LOT "34"  
O.R.B. 794  
PAGE 1993

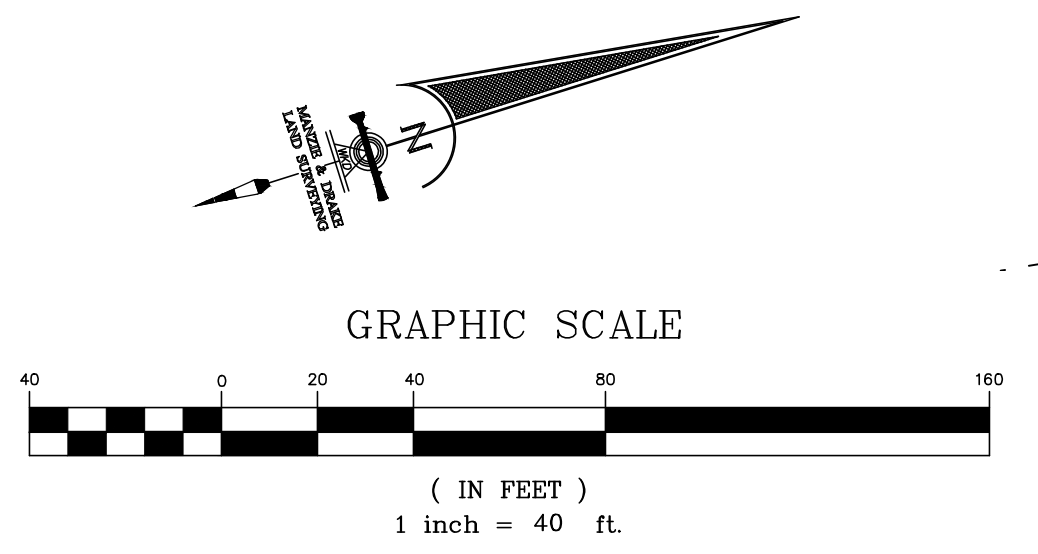
MEAN HIGH WATER LINE AS LOCATED 12/15/09 ELEVATION 2.39' NAVD 88 END LOCATED MEAN HIGH WATER

US ARMY CORP OF ENGINEERS BRASS DISK STAMPED "RICHARD E. BONNER 2007" N 2304621.0875 E 509882.4313 ELEVATION=7.36' N.A.V.D. 18

"OPS FRONT 2" FERNANDINA HARBOR LINE CONCRETE MONUMENT R-11 ELEV.=5.20' (N.A.V.D. 1988) N 2,304,101.3550 E 509,986.3610

**MAP OF HYDROGRAPHIC SURVEY**  
FERNANDINA BEACH MARINA,  
NASSAU COUNTY, FLORIDA.

SEE SHEET 2 OF 2 FOR SURVEY NOTES



**ELEVATION NOTE**  
ELEVATION SPOTS SHOWN HEREON ARE ON MEAN LOW LOW WATER (M.L.L.W.) DATUM (SUBTRACT 3.822' TO CONVERT THESE SPOT ELEVATIONS BACK TO N.A.V.D. 1988 DATUM)

**MANZIE & DRAKE LAND SURVEYING**  
117 South Ninth Street, Fernandina Beach, FL 32034  
(904) 491-5700 FAX (904) 491-5777  
Certificate of Authorization Number "LB 7039"  
"OUR SIGHTS ARE ON THE FUTURE. SET YOUR SITES ON US."

MICHAEL A. MANZIE, P.L.S. 4069  
 GUY L. MELVIN, P.L.S. 4729

SCALE: 1"=40' JOB NO: 17280 DATE: 3/23/17 CADD: WKD SHEET 1 OF 2  
F.B. NO: X-307 PAGE NO: 24 FIELD CREW: GS FILE NO: C-741(A)

