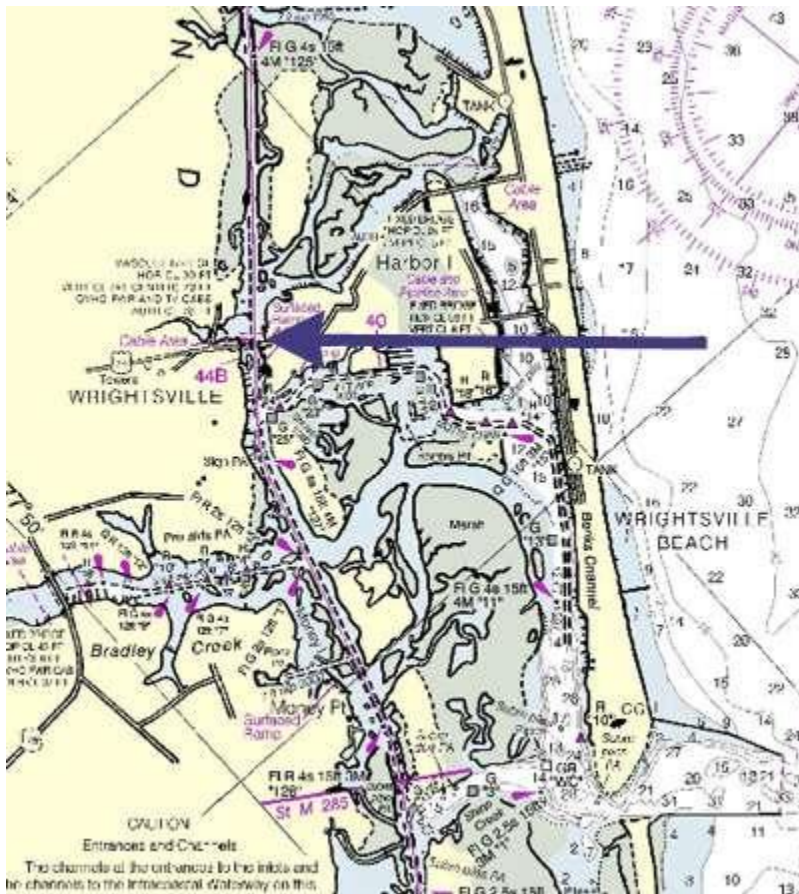


**NC (Mile 283.1): Wrightsville Beach  
(state Route 74) Bascule Bridge  
Repair May Cause Waterway Delays  
Through Early April 2009**



*Chart not to be used for navigation. (NOAA Chart 11541)*

**From the Week 4 District 5 Local Notice to Mariners:**

*Mariners are advised that structural repairs will be conducted from February 20 until April 5, 2009 at the S.R. 74 Bridge, at AIWW Mile 283.1, at Wrightsville Beach, NC.*

*To facilitate repairs, construction equipment (two barges, measuring 40 feet X 60 feet with crane and work platforms measuring 10 feet X 15 feet along with two work boats) will occupy the channel to perform pile replacement, sheet piling, excavation, and concrete fill. Normal activity will be from 7 a.m. until dark, Monday through Saturday.*

*There are activities which will require placement of construction equipment in the channel:*

- 1) During sheet piling driving operations, each day from 11:30 p.m. to 5 a.m. beginning February 23 to 25, 2009, and from March 2 to 4, 2009, the drawbridge will be in the full opened position to vessels; however, construction equipment will be moored in the navigable channel reducing the available horizontal clearance to approximately 45 feet.*
- 2) After the sheet pile wall is installed, the larger 40 X 60 barge will only be placed in the channel intermittently throughout the remainder of the project and there will be no conflict with the channel on any Friday through Sunday, nor any holidays.*
- 3) During concrete placement at the end of the project, the larger 40 X 60 barge may be placed in the channel for one day or one night only, ranging from March 20 to April 2, 2009.*

*Mariners requiring the full width of the channel are requested to provide at least two hours advance notice by calling either 910-612-8112 or the bridge tender at 910-256-2886. Construction equipment will be moored outside the navigable channel when not utilized. All barges will be marked with red quick flash lights on all corners adjacent to the channel and white steady burn lights on the corners furthest from the channel. Mariners should also use extreme caution when transiting the area.*

For current navigational updates or to submit your own, visit our [Web site](#).